



DX8100-512RAM

Installation Manual

DX8100 Digital Video Recorder

C2634M (5/07)

Introduction

The following instructions serve as a guide for the installation of the DX8100-512RAM memory expansion module.

PARTS LIST

Qty	Description
1	512 MB double data rate (DDR) dual in-line memory module (DIMM)
1	Adhesive-backed upgrade part label




Figure 1. 512 MB DIMM Module

TOOLS NEEDED

1	Phillips-head screwdriver #1 (nonmagnetic)
1	Properly grounded ESD wrist strap and mat
4	Small containers for storing screws (optional)

Getting Ready

1. Familiarize yourself with the instructions throughout this manual.
2. Check that you have all the necessary parts and tools. Refer to the Parts List and Tools Needed sections.
3. Shut down the DX8100 Series DVR unit. Refer to DX8100 Installation Manual or Operations and Programming Manual for instructions on shutting down your unit.
4. Unplug the power cord from the wall socket and then from the rear of the DVR.

 **WARNING:** For safety reasons, you must remove the power cord because current continues to flow through the DX8100 even when the unit is off. Remove the power cord from the wall socket first and then from the rear of the DVR. It is critical that the unit be unplugged for your safety.

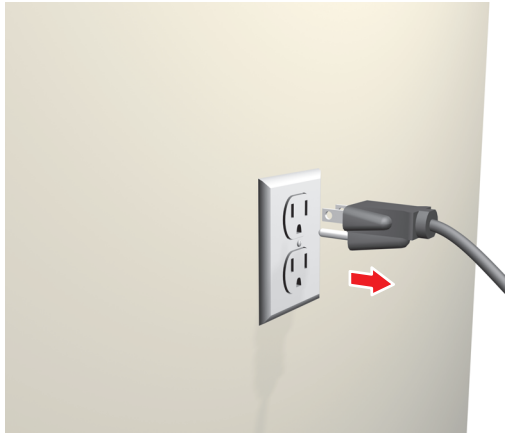


Figure 2. Removing Power Cord from Wall



Figure 3. Removing Power Cord from Unit

5. Ensure that the DX8100 Series DVR and all of its components are protected against electrostatic discharge (ESD). Before handling any electronic components, you should take steps to ground yourself properly so that any built-up static electric charges are dissipated away from the unit. The most effective method for combating ESD is to use a properly grounded wrist strap.

NOTE: If you do not have access to a grounded wrist strap, you can discharge any built-up static by periodically touching an unpainted section of the chassis.

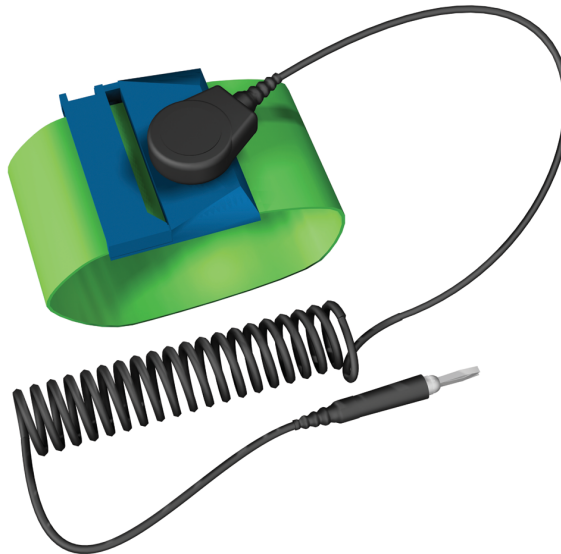



Figure 4. ESD Protection

Prepare Unit for RAM Installation

OPEN THE UNIT CHASSIS

 **WARNING:** The chassis assembly includes parts with sharp edges. To avoid injury, use caution when working in and around the DX8100's chassis and components.

1. If the DX8100 is mounted in a rack, remove it and transport it to an area that will provide full access to the unit chassis:
 - a. Disconnect any cables or connections that might restrict access to or the removal of the unit.
 - b. Unscrew the fasteners that are securing the unit in the rack.
 - c. Carefully lift the unit out of the rack.

NOTE: Removing the DX8100 from a rack may require more than one person. Refer to the DX8100 Installation Manual for rack mounting information.

2. Place the DX8100 on a flat surface with ample workspace.

- Using a Phillips-head screwdriver, remove the chassis cover:

WARNING: Make sure unit is turned off and you are wearing a properly grounded ESD wrist strap before attempting to open the DX8100 chassis cover. Refer to the Getting Ready section.

- Remove the two top-most screws on the left and right side panels of the DX8100. Refer to Figure 5.
- Remove the four silver screws fastening the cover to the rear of the unit. These screws are the ones closest to the top of the unit. Refer to Figure 5.
- Carefully remove the chassis cover by sliding it back and up. Set aside the cover. Figure 6 illustrates the interior of the DX8100.



Figure 5. Removing Chassis Cover

COMPONENT LAYOUT

Figure 6 shows the location of your DX8100 Series DVR's major components. Certain cables and components have been omitted from the illustrations in this manual for the purpose of clarity.

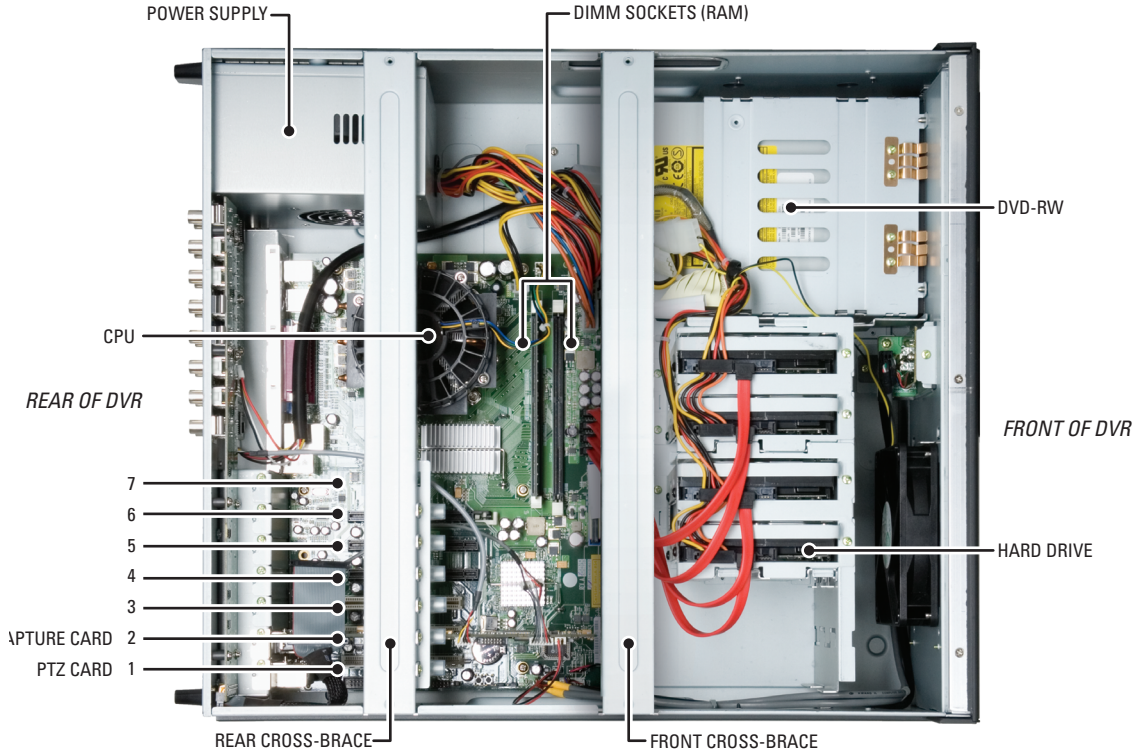


Figure 6. DX8100 Interior

Install the DX8100-512RAM Memory Module

NOTE: If applicable, ensure that the DIMM module with the highest memory capacity is installed in DIMM1 and the DIMM module with the next highest capacity is installed in DIMM2.

Install the additional DX8100-512RAM module as follows:

1. Carefully remove the DX8100-512RAM DIMM module from its static-safe packaging. Handle the DIMM by its edges and avoid contact with the module's chips or conductive leads.
2. Locate the empty DIMM socket. This socket is directly adjacent to the socket containing the existing DIMM module. Refer to Figure 7.

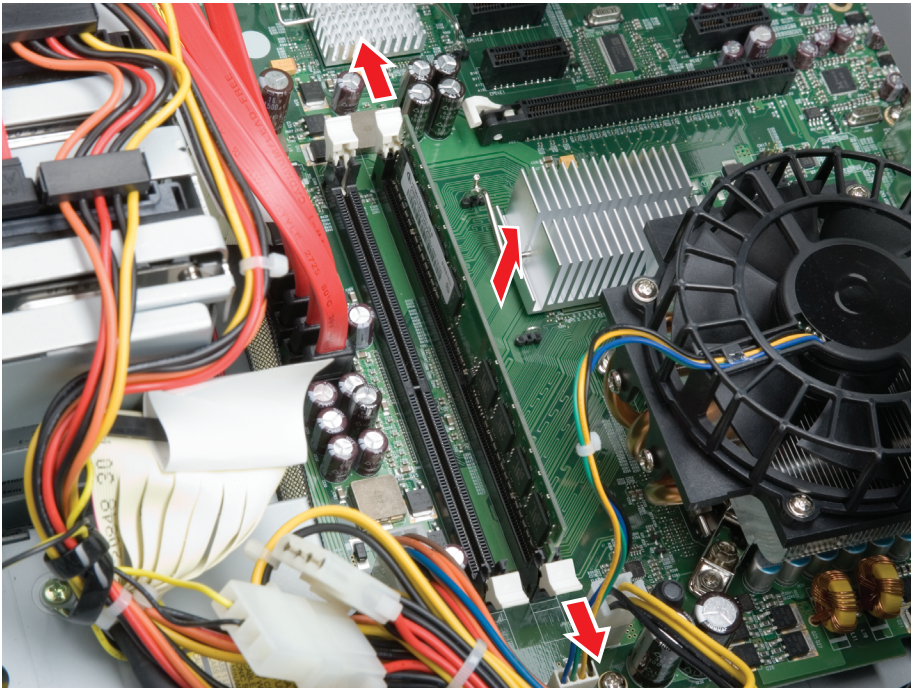


Figure 7. First Empty DIMM Socket

3. To install the DX8100-512RAM module, do the following:
 - a. Align the DIMM module with the socket so that the notch in the module lines up properly with the break in the DIMM socket. Refer to Figure 8.
 - b. Make sure that the white retaining clips are not in the locked position by pressing outward and down on each clip. Refer to Figure 8.

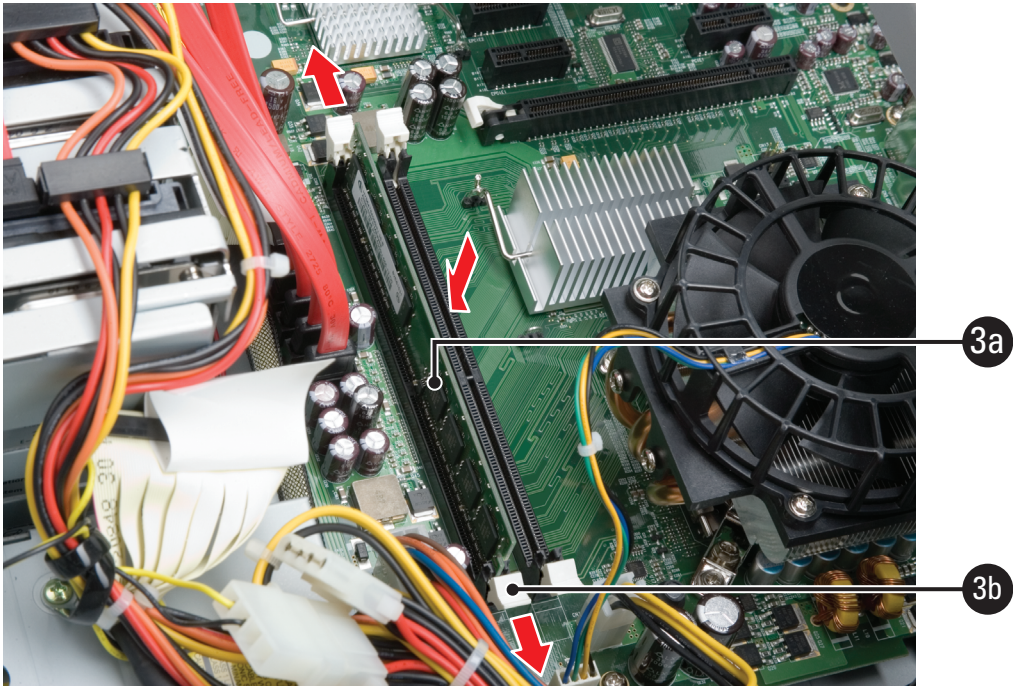


Figure 8. DIMM Module and DIMM Socket Alignment

4. Carefully, but firmly, push the DIMM module into the empty socket until it is properly seated. The module is properly seated when the retaining clips snap back into place as in Figure 9.

NOTE: When inserting the DIMM module into the socket, use enough pressure to ensure that the retaining clips snap back into place. Be careful, however, not to use excessive force that might damage the DIMM module or surrounding components.

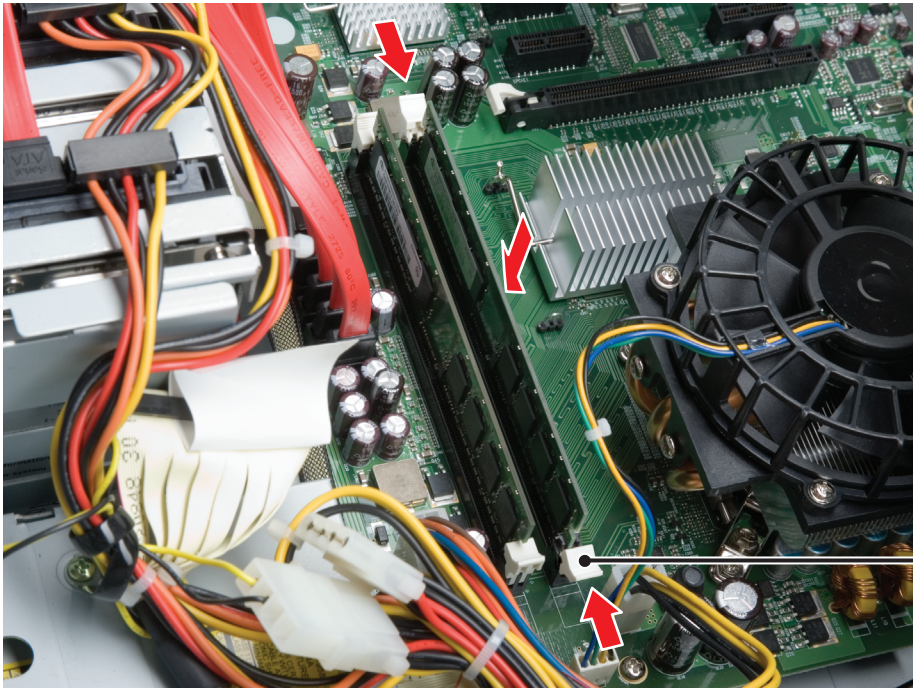


Figure 9. Seating and Securing the DIMM Module

Reassemble the Unit

1. Replace the chassis cover using the same screws you removed from the side and rear of the unit. Refer to Figure 10.



Figure 10. Replacing Chassis Cover

2. Attach the silver part label that came in your upgrade kit to the inside of your DVR's front door.
 - a. Remove the paper backing from the part label.
 - b. Carefully place the label, adhesive-side down, on a free section of the inside of the door.
 - c. Press down firmly to ensure that the label properly adheres to the inside of the door.

NOTE: In the event that your unit or its components require service, part labels must be present and appropriately affixed to the unit's door. Pelco product support personnel use these labels to identify the exact components installed in your system. A separate part label is required for each upgrade component installed on the DX8100.

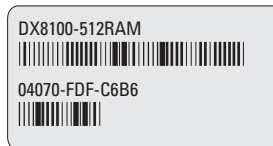


Figure 11. Product Label

3. Reinstall the unit in a rack enclosure if necessary, and reconnect all cables and peripheral equipment that you removed earlier.
4. Plug the power cord back into the power supply and then into the wall.
5. Turn on the power switch and allow the unit to start up and find the new memory. This may take several minutes.

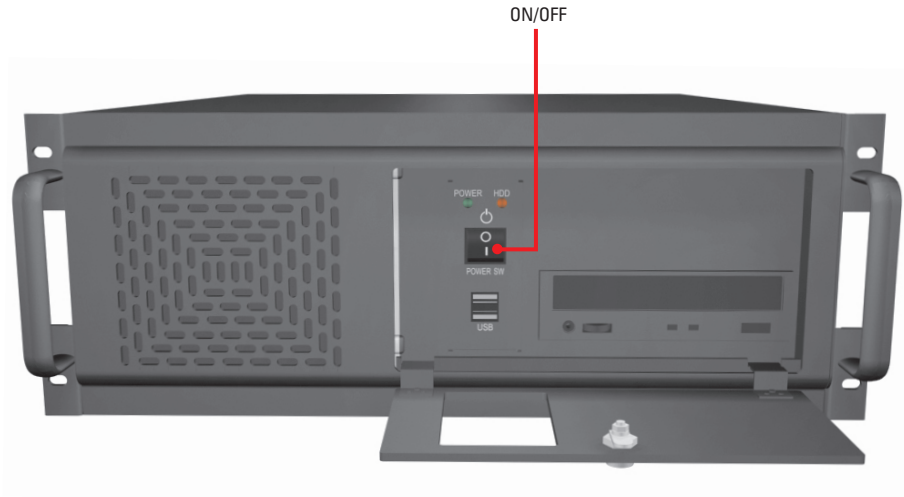


Figure 12. Restarting the Unit

Completing the Memory Upgrade Process

After installing the DX8100-512RAM upgrade, you must do the following:

- Verify the new memory installation
- Increase the paging file size

To verify the new memory installation and increase the paging file size:

1. After the DX8100 application starts, log in as an administrator level user and exit to the Windows® operating system. Refer to the Installation or Operations and Programming manuals that came with your unit for instructions.
2. Go to Start > Settings > Control Panel. The Control Panel window appears.

3. Double-click the System icon. The system properties dialog box opens.

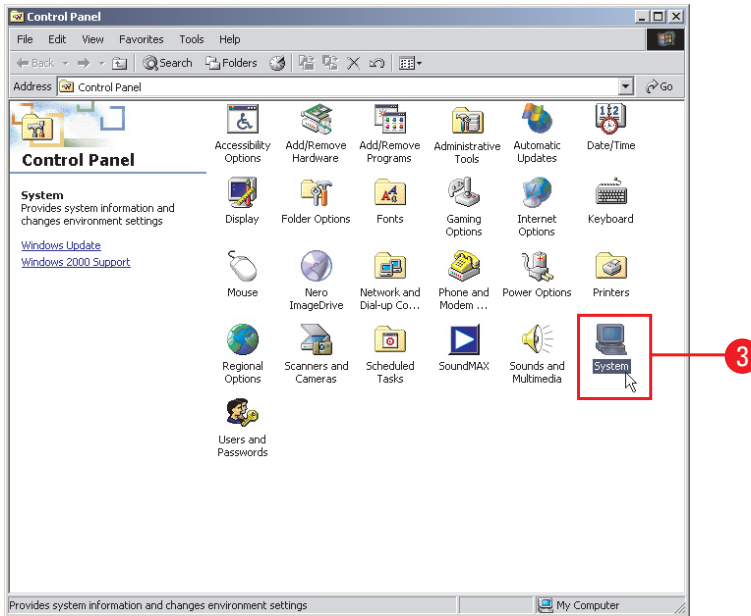


Figure 13. Windows 2000 Control Panel

4. Verify that the amount of RAM is now 1 GB. Refer to Figure 14.

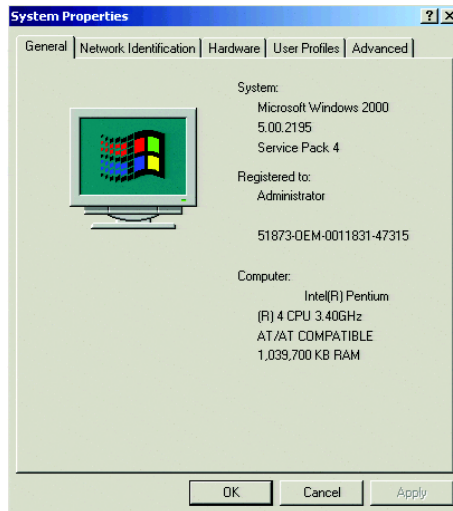


Figure 14. System Properties Dialog Box

5. In the System Properties dialog box, click the Advanced tab.

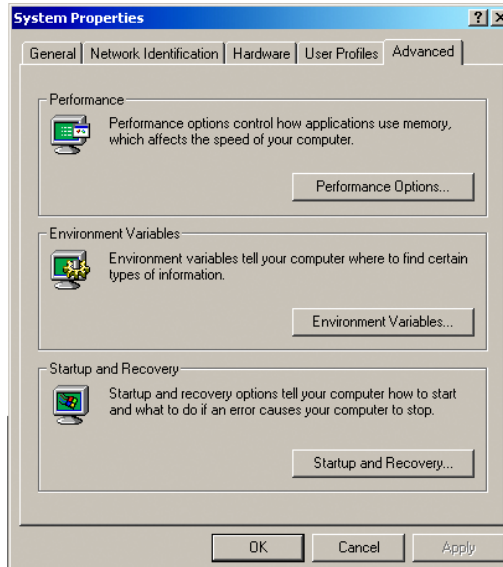


Figure 15. Advanced Page

6. Click the Performance Options button. The Performance Options dialog box opens.

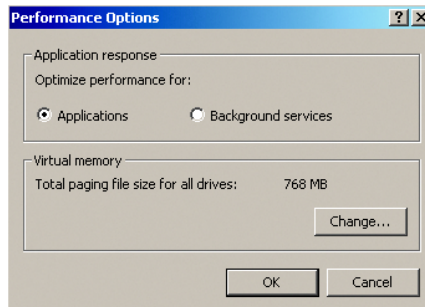


Figure 16. Performance Options Dialog Box

7. Click the Change button. The Virtual Memory dialog box opens.

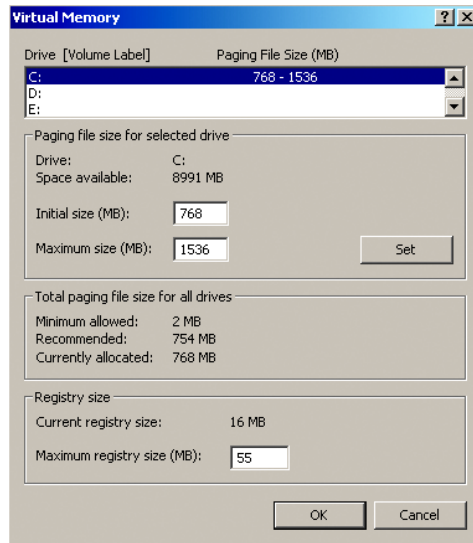


Figure 17. Virtual Memory Dialog Box

8. In the “Paging file size for selected drive” area, do the following:
 - a. In the Initial size (MB) text box, delete 768 and then enter 1536.
 - b. In the Maximum size (MB) text box, delete 1536 and then enter 3072.

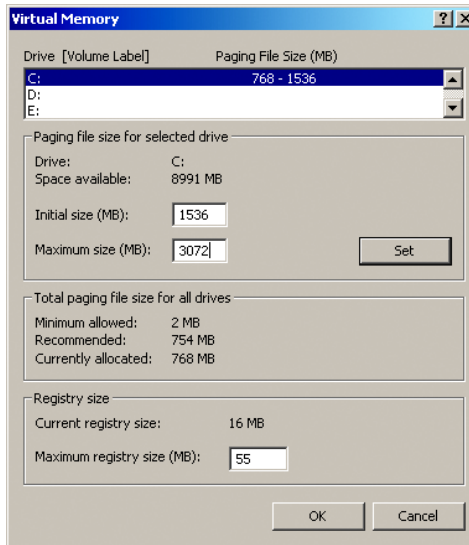


Figure 18. New Paging File Sizes

- c. Click the Set button.
 - d. Click OK. The Performance Options dialog box opens.
9. In the Virtual memory area of the Performance Options dialog box, verify that the total paging file size for all drives is 1536 MB.

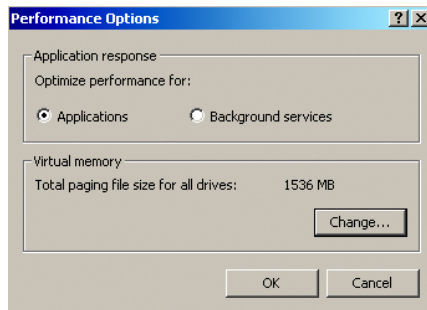


Figure 19. New Paging File Size

10. Click OK.
11. In the System Properties dialog box, click OK.

PRODUCT WARRANTY AND RETURN INFORMATION

WARRANTY

Pelco will repair or replace, without charge, any merchandise proved defective in material or workmanship **for a period of one year** after the date of shipment.

Exceptions to this warranty are as noted below:

- Five years on fiber optic products and TW3000 Series unshielded twisted pair transmission products.
- Three years on Spectra® IV products.
- Three years on Genex® Series products (multiplexers, server, and keyboard).
- Three years on Camclosure® and fixed camera models, except the CC3701H-2, CC3701H-2X, CC3751H-2, CC3651H-2X, MC3651H-2, and MC3651H-2X camera models, which have a five-year warranty.
- Three years on PMCL200/300/400 Series LCD monitors.
- Two years on standard motorized or fixed focal length lenses.
- Two years on Legacy®, CM6700/CM6800/CM9700 Series matrix, and DF5/DF8 Series fixed dome products.
- Two years on Spectra III™, Esprit®, ExSite®, and PS20 scanners, including when used in continuous motion applications.
- Two years on Esprit and VVW5700 Series window wiper (excluding wiper blades).
- Two years (except lamp and color wheel) on Digital Light Processing (DLP®) displays. The lamp and color wheel will be covered for a period of 90 days. The air filter is not covered under warranty.
- Eighteen months on DX Series digital video recorders, NVR300 Series network video recorders, and Endura™ Series distributed network-based video products.
- One year (except video heads) on video cassette recorders (VCRs). Video heads will be covered for a period of six months.
- Six months on all pan and tilts, scanners or preset lenses used in continuous motion applications (that is, preset scan, tour and auto scan modes).

Pelco will warrant all replacement parts and repairs for 90 days from the date of Pelco shipment. All goods requiring warranty repair shall be sent freight pre-paid to Pelco, Clovis, California. Repairs made necessary by reason of misuse, alteration, normal wear, or accident are not covered under this warranty.

Pelco assumes no risk and shall be subject to no liability for damages or loss resulting from the specific use or application made of the Products. Pelco's liability for any claim, whether based on breach of contract, negligence, infringement of any rights of any party or product liability, relating to the Products shall not exceed the price paid by the Dealer to Pelco for such Products. In no event will Pelco be liable for any special, incidental or consequential damages (including loss of use, loss of profit and claims of third parties) however caused, whether by the negligence of Pelco or otherwise.

The above warranty provides the Dealer with specific legal rights. The Dealer may also have additional rights, which are subject to variation from state to state.

If a warranty repair is required, the Dealer must contact Pelco at (800) 289-9100 or (559) 292-1981 to obtain a Repair Authorization number (RA), and provide the following information:

1. Model and serial number
2. Date of shipment, P.O. number, Sales Order number, or Pelco invoice number
3. Details of the defect or problem

If there is a dispute regarding the warranty of a product which does not fall under the warranty conditions stated above, please include a written explanation with the product when returned.

Method of return shipment shall be the same or equal to the method by which the item was received by Pelco.

RETURNS

In order to expedite parts returned to the factory for repair or credit, please call the factory at (800) 289-9100 or (559) 292-1981 to obtain an authorization number (CA number if returned for credit, and RA number if returned for repair).

All merchandise returned for credit may be subject to a 20% restocking and refurbishing charge.

Goods returned for repair or credit should be clearly identified with the assigned CA or RA number and freight should be prepaid. Ship to the appropriate address below.

If you are located within the continental U.S., Alaska, Hawaii or Puerto Rico, send goods to:

Service Department
Pelco
3500 Pelco Way
Clovis, CA 93612-5699


If you are located outside the continental U.S., Alaska, Hawaii or Puerto Rico and are instructed to return goods to the USA, you may do one of the following:

If the goods are to be sent by a COURIER SERVICE, send the goods to:

Pelco
3500 Pelco Way
Clovis, CA 93612-5699 USA

If the goods are to be sent by a FREIGHT FORWARDER, send the goods to:

Pelco c/o Expeditors
473 Eccles Avenue
South San Francisco, CA 94080 USA
Phone: 650-737-1700
Fax: 650-737-0933

 **Green** The materials used in the manufacture of this document and its components are compliant to the requirements of Directive 2002/95/EC.

REVISION HISTORY

Manual #	Date	Comments
C2634M	5/07	Original version.

Pelco, the Pelco logo, Camclosure, Esprit, ExSite, Genex, Legacy, and Spectra are registered trademarks of Pelco.

Endura is a trademark of Pelco.

DLP is a registered trademark of Texas Instruments, Inc.

Windows is a registered trademark of the Microsoft Corporation.

©Copyright 2007, Pelco. All rights reserved.



Worldwide Headquarters
3500 Pelco Way
Clovis, California 93612 USA

USA & Canada
Tel: 800/289-9100
Fax: 800/289-9150

International
Tel: 1-559/292-1981
Fax: 1-559/348-1120

www.pelco.com

ISO9001

Australia | Canada | Finland | France | Germany | Italy | Macau | The Netherlands | Russia | Singapore
South Africa | Spain | Sweden | United Arab Emirates | United Kingdom | United States